

'The Redbridge Experience'

Keith Newton
Vision Redbridge Culture & Leisure
26th March 2009

INTRODUCTION

I will explain:

- About Redbridge
- History / Redbridge Decision
- About Vision RC&L
- First 2 years operation
- Questions

ABOUT REDBRIDGE

- Outer London Borough
- 250,000 Population approx
- 97,329 households
- 5,652 Hectares (13,900 acres)
- 21 Wards / 63 Councillors

ABOUT REDBRIDGE

- 33 Con/18 Lab/10 Lib Dem
- 9th Most Diverse Community
- 36.5% Population BME
- Areas of Affluence & Deprivation
- Deprived Areas –
 - Lower Life Expectancy
 - More General Health Issues

REDBRIDGE LEISURE HISTORY



- In House until CCT
- Contemporary Leisure
- CCL
- Parkwood Leisure

LBR DECISION

- Establish a new NPDO April 2007
- Transfer of 4 sites
- TUPE of Parkwood employees
- NNDR (rates) savings
- VAT advantages
- Partnership approach

BASIS OF IMPLEMENTATION



- Funding Agreement
- Leases & Licences
- Condition Surveys
- Division of Responsibilities
- Political Will To Make It Happen
- Protection Re: Redundancies/ Utilities/ Maintenance

VISION BOARD

- **Community Representatives**

Tony Maxwell
Martin Solder
Brian Spinks
David Miller
Mandeep Gabhari
Craig Burrow
Megha Kumar

- **Council Representatives**

Robin Turbfield
Vinaya Sharma

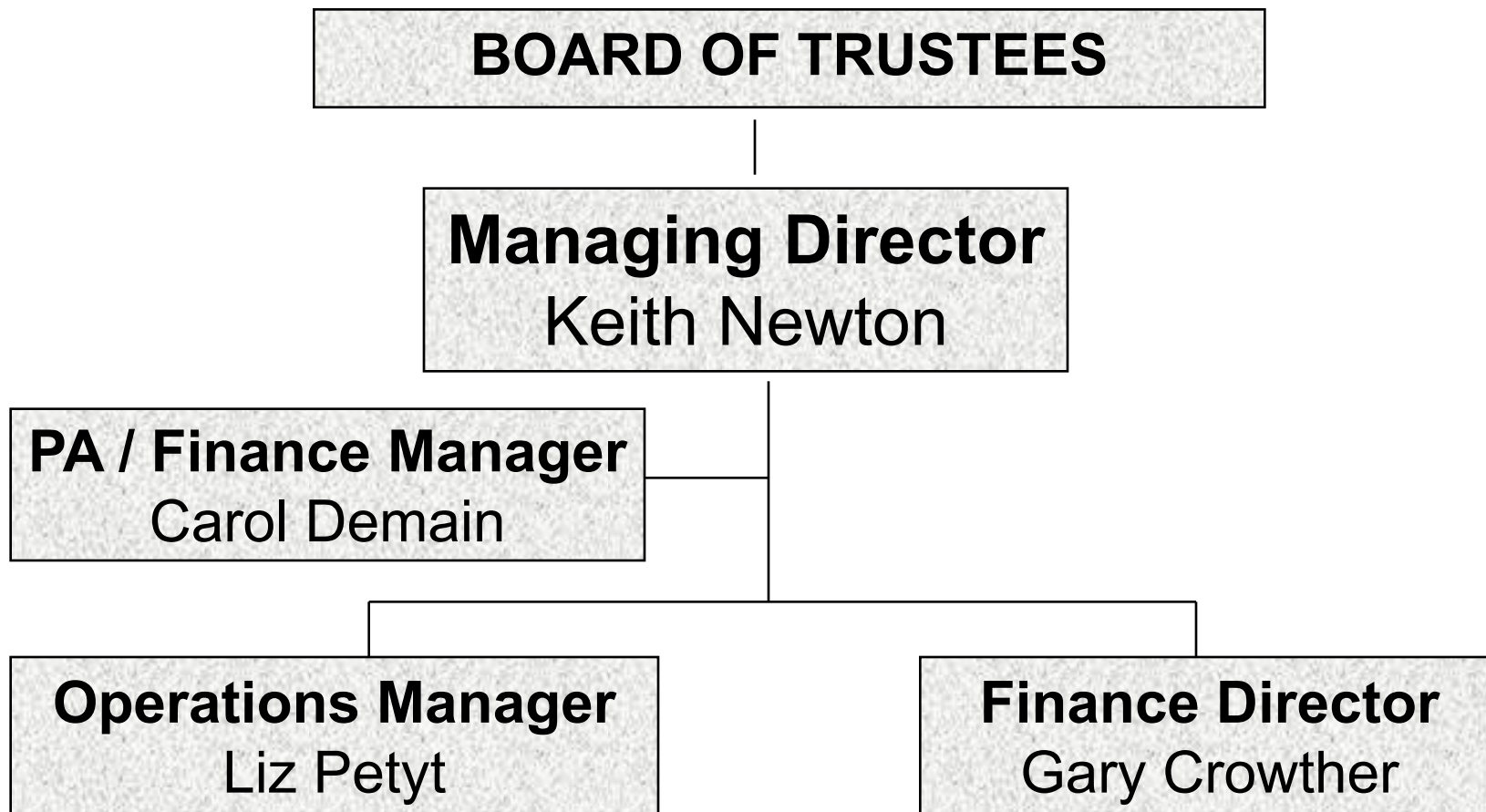
- **Staff Representative**

Andy Jones

- **Managing Director**

Keith Newton

SENIOR MANAGEMENT



FIRST YEAR PERFORMANCE



- Fullwell Cross Phase 1
- QUEST
- Website
- Registered Charity
- Customer Consultation / User Groups

FIRST YEAR Cont.



- Increasing Visits / Improving Performance
- Culture Change (Partnership)
- SPORTA / UKFN / FIA / APSE
- All Party Scrutiny
- External Audit / AGM 10/09/08

2nd YEAR CHALLENGES / OPPORTUNITIES



-
- Exercise on Referral 01/09/08
 - Ilford Pools Closure 28/09/08
 - Redbridge Cycling Centre 01/11/08
 - Fairlop Waters 01/11/08

2ND YEAR PLANS / OPPORTUNITIES



- Fullwell Cross Phase II
- Vision Investment – Café / Gym
- Wanstead Leisure Centre 01/04/09
- EPOS / Leisure Card

SUMMARY SINCE APRIL 2007



- Facility Improvements
- Investment in new Equipment / Repairs
- Quality Awards
- Staff more customer focused/responsive
- Service Improvements (Compliments)
- Solid Financial Performance
- Expanding Partnership

SPORTA INFO

- 120 Leisure Trusts in UK
- 920 Individual Sites
- Combined Turnover £625m
- 210m customer visits
- 26,000 FT Employees

Any questions ?

‘Partnership is the Key’

www.vision-rcl.org.uk